



# PLANNING YOUR KITCHEN

# PEKA

## THE ORIGINAL AND BEST SINCE 1964

---

**Your enjoyment of your home is our chief concern. We at peka are passionate about enhancing your enjoyment of your home with our practical, flawlessly made furniture fittings that combine an attractive appearance with unmatched quality.**

We have been developing and manufacturing pull-outs, accessories and smart interior solutions for the kitchen and furniture industry for over fifty years. Thanks to our steadfast commitment to finding out exactly what our customers want, our products are always designed to respond to real needs, so it is only natural that they stand out through their user-friendliness, unparalleled quality and space-saving design.

Our unwavering dedication to producing inventive, space-saving solutions and our resolute refusal to compromise on quality and functionality have

made us a global leader in our industry. Today, we are one of the top market providers of larder unit pull-outs, slide-out corner systems and ecologically designed waste sorting systems. Our numerous international patents stand testament to our ingenuity.

peka-metall AG was set up as a family-run business in 1964. Its head office is in Mosen, on the shores of Lake Hallwil near Lucerne. As an independent Swiss manufacturing and trading company, it has established a leading position in the furniture sector. We currently employ around 130 people and sell our products in over 50 countries around the world.



# USE OF SPACE



«Our kitchen is great because we can use every last inch of space in it.»

Choosing the perfect kitchen units is not enough to guarantee you the perfect storage space. Only by selecting the right units for your kitchen layout and the right interior fittings to match can you be sure of enjoying maximum accessibility and convenience. peka's corner unit and larder unit pull-outs make full use of the space in your kitchen units and keep all your tools and ingredients within easy reach.



Storage space: use every last inch of space.

→ **Magic Corner corner pull-out**



Thin-walled pull-out shelves and dividers make the most of the available space.

→ **Extendo pull-out shelf**



Height-adjustable shelves help you to use your storage space flexibly.

→ **Standard larder pull-out**



Double your storage space with dual-level shelves.

→ **Extendo extra shelves**



Narrow pull-outs give an excellent overview of all your stored items.

→ **Standard 150 larder pull-out**

# ACCESSIBILITY



«My perfect kitchen? One where everything I need for cooking is always within easy reach.»

When planning your unit interiors, make sure you can access all the storage space they offer. Spaces that are very high up or very low down – or very deep in the unit – can be hard to get to. peka's storage mechanisms and systems bring everything within easy reach – however far away it may have seemed at first glance.



Easily reach to the very top, bottom or back of your units.

→ Pegasus shelf lift



Pull-out systems for easy access and a clear overview.

→ Extendo pull-out shelf



Good organisation = opening fewer cupboards when you cook. Cutting out unnecessary movements.

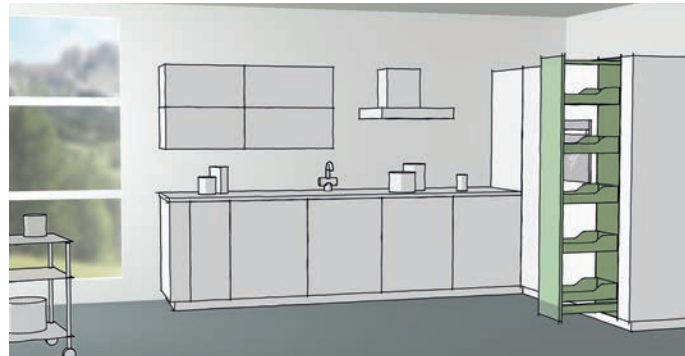
→ Kitchen Tower and Snello base unit pull-outs



Easy access to unit contents from three sides.

→ Pleno Plus larder pull-out

# FOOD STORAGE

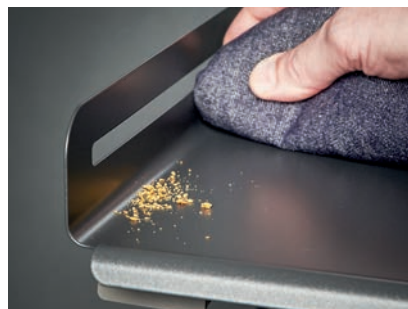


«My units should be organised to suit me,  
not the other way around.»

The major advantage of centralised food storage: you know exactly where to find what you want and you do not need to waste time searching for it. An organised food storage system saves you both time and money: it eliminates the need for walking around and, more importantly, cuts out unnecessary duplicate purchases. peka's contemporary kitchen larder organisers are highly versatile and can easily be adapted to suit whatever you want to store.



A clear view from the side.  
→ **Standard larder pull-out**



Shelves with closed bases stop food from falling through and are easy to clean.  
→ **Extendo pull-out shelf**



Flexible systems for dividing up your storage space.  
→ **Wooden boxes**

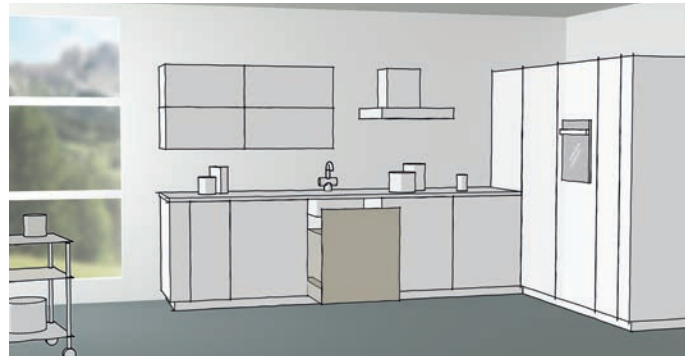


Store your groceries in one central unit, not in different cupboards.  
→ **Pleno Plus larder pull-out**



Store bottles and condiments together in a smart base unit pull-out.  
→ **Snello base unit pull-out**

# WASTE DISPOSAL



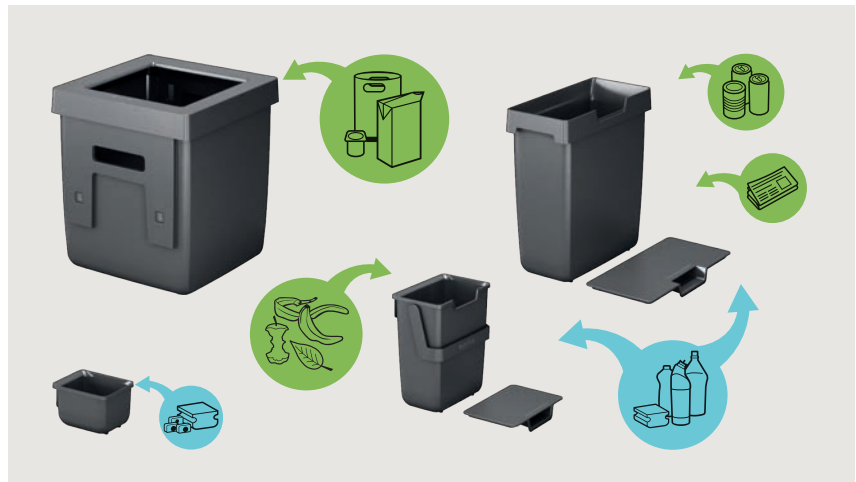
«We hardly ever think about waste, but it causes so many problems in the household.»

Which piece of kitchen equipment is used most often? The waste bin, of course. With that in mind, it is worth spending a few minutes thinking about waste disposal when you plan your kitchen. After all, a well-planned waste system makes it a lot easier to clean up. A good waste system – like peka's, for instance – should be modular and should be tailored to your requirements.



What do you want to store in your waste system?

→ Oeko waste system



Dishwasher safe materials and an easy-clean design

→ Oeko recycle bins



Changing bin bags is child's play when your bin has a smart tensioning system  
→ patented tensioning system



Choose a bin that lets you fill bin bags right up

→ Müllboy Big waste system







# COLOURWAY: ANTHRACITE

---

## *A PERFECT MARRIAGE OF WOOD AND METAL*

Warm, natural colours and materials are the latest trend in the furniture world. Wood and metal – for instance, oak and steel – complement one another and make for aesthetically appealing pieces.

The lines between the kitchen and the living area are becoming increasingly blurred, making style, design and functionality more important than ever. When teamed with light wood, anthracite interior fittings made of coated steel project a subtle air of understated elegance.

Excellent organisation and a clear overview of all your supplies.



Extendo Libell larder pull-out: The flexible pull-out shelf that is right at home anywhere



Hochschrank Standard larder pull-out:  
The handy front pull-out for  
practical kitchens



Extra shelves for Extendo: Creates an additional shelf level

Day-to-day use soon highlights the difference between good design and perfect design.



Snello base unit pull-out: The space-saving pull-out system for compact kitchens



Pegasus shelf lift: For easy access to high shelves



Items that belong together  
should be stored together – in a  
single unit.



Kitchen Tower base unit pull-out: Compact design for efficiently storing your most-used kitchen utensils in one place



Magic Corner Flex corner pull-out: Just swing the front panel and the front shelves to one side and the back shelves automatically slide forwards

Even a cleaning cupboard can be neat and attractive!



Sesam Standard and Tablo (left) for cleaning cupboards: For organised storage of cleaning and housekeeping items





Because  
you need me  
32 times a day!



Oeko Complet waste system: The hard-wearing complete system for household waste sorting



1



3



5



2



4



6



7

**1 – Extendo Libell larder pull-out**

Colour: anthracite  
Unit widths: 450/600/900 mm  
Interior depth: 480/505 mm

**2 – Standard larder pull-out**

with Libell clip-on shelf  
Colour: anthracite  
Unit widths: 300/450 mm  
Installation height: 900–2260 mm

**3 – Magic Corner Flex corner pull-out**

with Libell clip-on shelf  
Colour: anthracite  
Door width min.: 450mm

**4 – Extendo Libell pull-out shelf**

Colour: anthracite  
Unit widths: 450/600/900 mm  
Interior depth: 480/505 mm

**5 – Kitchen Tower base unit pull-out**

Colour: anthracite  
Unit widths: 450/600 mm  
Installation height: 560 mm

**6 – Magic Corner Comfort corner pull-out**

with Libell clip-on shelf  
Colour: anthracite  
Door width min.: 450 mm

**7 – Snello base unit pull-out 300**

Colour: anthracite  
Unit widths: 150/200/300 mm  
Installation height: 520 mm



8



10



13



9



11



12



14

**8 – Snello base unit pull-out 150**

Colour: anthracite  
Unit widths: 150/200/300 mm  
Installation height: 520 mm

**9 – Pegasus shelf lift**

Colour: anthracite  
Unit widths: 900 mm  
Installation height: 660–946 mm

**10 – Snello towel rail extension**

Colour: anthracite  
Unit width: 150 mm  
Installation height: 660 mm

**11 – Foot pedal for Oeko**

Colour: mat chromed  
Plinth height: min. 75 mm  
Plinth recess: min. 25 mm  
Ejection stroke: 45 mm

**12 – Extendo extra shelf**

Colour: anthracite  
Unit widths: 600/900 mm

**13 – Sesam Standard for cleaning cupboards**

Colour: anthracite  
WxDxH: 351x365x752 mm

**14 – Oeko Complet waste system**

Colour: anthracite  
Unit widths: 600 mm  
Installation height: 460/490 mm





# COLOURWAY: WHITE

—

## *LIGHT, BRIGHT WHITE*

Bright, fresh white has an inspiring, calming effect and lightens any room. Clean, straight lines create an elegant, peaceful ambiance and make the space attractive – no embellishment required.

Minimalist design blends beautifully with simple, linear architecture and sets it off to best advantage. Interior fittings made of white coated steel are a perfect match for white furniture or, indeed, furniture of any other colour.



Pleno Plus larder pull-out: Laid out just like a refrigerator: The small shelves built into the doors offer easy access and the larger shelves slide out of the unit automatically when the doors are opened

An unbeatable overview of groceries and tableware with just one simple movement!



Pleno Plus door shelves: Handy for small jars and cans



Pleno Plus larder pull-out:  
A full overview in just one easy step

Excellent organisation and a clear overview of all your supplies.



Hochschrank Standard larder pull-out: The handy front pull-out for practical kitchens



Extendo Libell larder pull-out: The flexible pull-out shelf that is right at home anywhere





Even a cleaning cupboard can be neat & attractive!



Sesam Standard for cleaning cupboards:  
For organised storage of cleaning and housekeeping items



Magic Corner Comfort corner pull-out: Optimal use of space in corner units

The right solution  
for any situation!



Extendo Libell pull-out shelf: The ideal internal pull-out



Extendo Libell dresser pull-out: Pull-out shelves for dresser  
units in kitchen corners



**1 – Extendo Libell larder pull-out**

Colour: white  
 Unit widths: 450/600/900 mm  
 Interior depth: 480/505 mm

**2 – Extendo Libell pull-out shelf**

Colour: white  
 Unit widths: 450/600/900 mm  
 Interior depth: 480/505 mm

**3 – Magic Corner Comfort corner pull-out**

with Libell clip-on shelf  
 Colour: white  
 Door width min.: 450 mm

**4 – Magic Corner Flex corner pull-out**

with Libell clip-on shelf  
 Colour: white  
 Door width min.: 450 mm

**5 – Standard larder pull-out**

with Libell clip-on shelf  
 Colour: white  
 Unit widths: 300/450 mm  
 Installation height: 900–2260 mm



6



7



8



9



10



10

**6 – Pleno Plus larder pull-out**  
with Libell clip-on shelf  
Colour: white  
Unit widths: 600 mm  
Installation height: 1900 mm

**7 – Picanto wall unit pull-out**  
Colour: silver  
Unit widths: 300 mm  
Installation height: 520 mm

**8 – Pegasus shelf lift**  
Colour: white  
Unit widths: 900 mm  
Installation height: 660-946 mm

**9 – Extendo Libell dresser pull-out**  
Colour: white  
Unit width: 600 mm  
Interior depth: 480/505 mm

**10 – Sesam Standard for cleaning cupboards**  
Colour: white  
WxDxH: 351x365x752 mm





# COLOURWAY: FIORO

---

## *FRONT PANELS, UNITS AND FITTINGS FORM A HARMONIOUS WHOLE*

Nowadays, kitchens open onto living areas, creating a shared space for cooking, living and relaxing. So it is only natural for you to pay more attention to the materials and surfaces you use in your kitchen. And it is only natural to want outstanding design on the inside of your units too.

We have partnered Fiore shelves with oak rails that blend seamlessly with wooden front panels and warm colours. These attractive interior fittings can also be combined with glass, compact laminates, aluminium, or any other material of your choosing. Let your creativity flow!



A centralised food storage system cuts out the need to walk around looking for items and saves you time and money.



Hochschrank Standard larder pull-out: The handy front pull-out for practical kitchens





Pleno Plus larder pull-out: Laid out just like a refrigerator: The small shelves built into the doors offer easy access and the larger shelves slide out of the unit automatically when the doors are opened



Extendo Fiore pull-out shelf: The flexible pull-out shelf that is right at home anywhere

Understated elegance  
from the kitchen to the living room





Snello base unit pull-out: The space-saving pull-out system for compact kitchens

Cooking is so much easier  
when everything is organised!



**Magic Corner Comfort corner pull-out:**  
Optimal use of space in corner units





1



3



5



2



3



4



6

**1 – Standard larder pull-out**  
with Fioro clip-on shelf  
Height of wooden rail: 52/87 mm  
Colour: anthracite/oak  
Unit widths: 300/450 mm  
Installation height: 900–2260 mm

**2 – Extendo Fioro pull-out shelf**  
Height of wooden rail: 87 mm  
Colour: anthracite/oak  
Unit widths: 600/900 mm  
Interior depth: 480/505 mm

**3 – Snello Fiore base unit pull-out**  
Height of wooden rail: 87 mm  
Colour: anthracite/oak  
Unit widths: 150/200/300 mm  
Installation height: 520 mm

**4 – Snello Fiore towel rail extension**  
Height of wooden rail: 87 mm  
Colour: anthracite/oak  
Unit width: 150 mm  
Installation height: 660 mm

**5 – Pleno Plus larder pull-out**  
with Fioro clip-on shelf  
Height of wooden rail: 52 mm  
Colour: anthracite/oak  
Unit widths: 600 mm  
Installation height: 1900 mm

**6 – Magic Corner Comfort corner pull-out**  
with Fioro clip-on shelf  
Height of wooden rail: 52 mm  
Colour: anthracite/oak  
Door width: 450 mm