

ARCHIS

ARCHITECTURAL HARDWARE SOLUTIONS

Solutions for Hotel Industry





▶ 1. Card Locks for Guest Rooms & Access Controlled Public Doors

Technology: Contactless Cards (Mifare)

Material: Zinc Alloy

Finish: SS

Plate Size: 300mm x 75mm x 20mm

Lockcase: With Latch, Deadbolt and Mechanical Key for Emergency Opening

Power Supply: 4 AA Batteries

Required Door Thickness: 35 – 55 mm

Accessories for Card Lock

1. Encoder (USB)
2. Software
3. Cards
4. Power Saving Switch (40 Amp, Works only with Mifare Card)
5. Lift Switch (Lift will work after showing a valid Mifare Card)
6. Data Collecting Cards (To Extract Unlock Records from Lock)





► 1. Card Locks for Guest Rooms & Access Controlled Public Doors

Technology: Contactless Cards (Mifare)

Material: SS 304

Finish: SS

Plate Size: 280mm x 79mm x 18mm

Lockcase: With Latch, Deadbolt and Mechanical Key for Emergency Opening

Power Supply: 4 AA Batteries

Required Door Thickness: 35 – 55 mm

Accessories for Card Lock

1. Encoder (USB)
2. Software
3. Cards
4. Power Saving Switch (40 Amp, Works only with Mifare Card)
5. Lift Switch (Lift will work after showing a valid Mifare Card)
6. Data Collecting Cards (To Extract Unlock Records from Lock)





▶ 1. Card Locks for Guest Rooms & Access Controlled Public Doors

3RD GENERATION CARD LOCKS FOR HOTELS

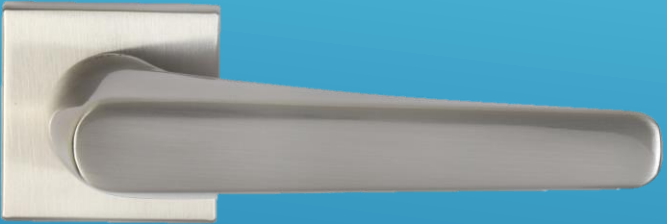
Features

1. The Locks Work With **Mifare Cards** Which is the **Latest Technology** in Card Locks For Hotels
2. **Setting up** the Lock for Use is **Much Easier** than Before
3. The **Software** Interface for the Computer is Very **Intuitive & Simple** to Operate
4. The **Latest Technology Encoder** Allows to Read the Card Just by Placing it Over, thus **Saving Time & Energy**
5. The Software **Supports All Versions of Windows** Operating Systems
6. **Simultaneous Multiple Check-ins** Can be Managed Effectively with Ease
7. **Ergonomic & Sturdy Handle Design**

The Mifare Advantage

1. The Card **Does not get Deactivated** in the presence of **Mobile Phone** which is a major problem with Magnetic Cards
2. The Staff Cards Can Be Set to Operate The Locks for a Limited Time Which Can Be **Split into 3 Shifts**
3. The Cards Can Be Integrated With the **Lift Switch** Which Will Operate The Lift Only With a Valid Card
4. All the **POS Billing Information** of Restaurants and Other Places can be Stored in the Card
5. **Lock Opening Records** Can Be **Extracted** from The Lock **Using a card** Which saves high cost of Extraction Machine
6. Power Saving Switch will **Work Only With Mifare Cards** Resulting in **Actual Saving of Power**

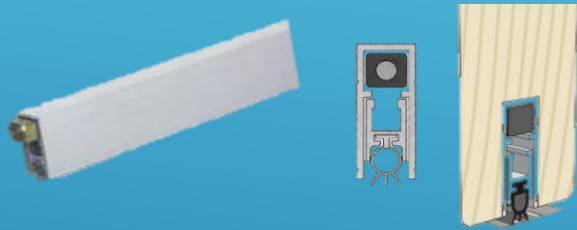
▶ 2. Mortice Handle for Bathrooms & Other Doors



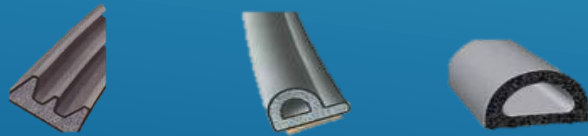
*Many More Design Options Available in Different Sizes & Finishes

▶ 3. Door Accessories

1. Drop Down Seal (For Door Bottom)



2. EPDM Seal (For Door Edges)



3. Hinges – Material: SS 304



4. Concealed Hinge



▶ 3. Door Accessories

5. Concealed Door Chain – Material: SS 304



7. Door Stopper – Material: SS 304



6. Door Eye – Material: Brass



8. Bathroom indicator Knob – Material SS 304



▶ 4. Door Closers



1. Concealed Type

Max Door Weight: 70 Kg

Max Door Width: 3'6"

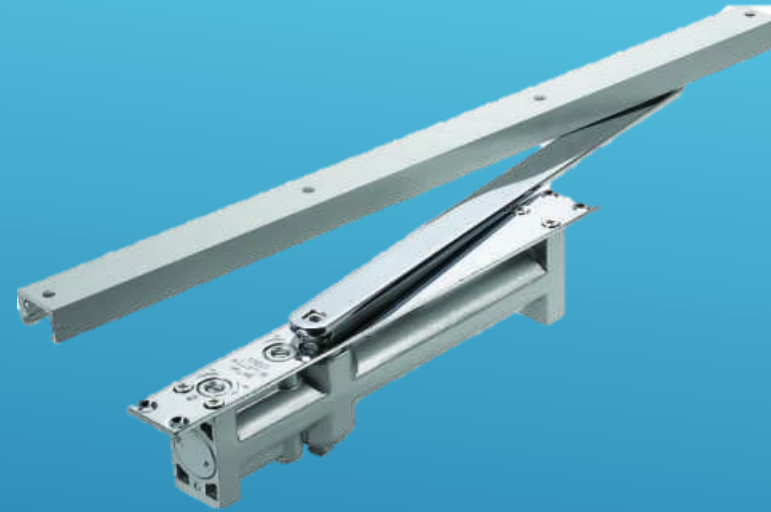
Minimum Door Thickness: 40mm

Speed Adjustments: 2

Hold Open: Yes

Fire Rating: EN 1154

Usage: Guest Room Doors, Public Doors



▶ 4. Door Closers

2. Exposed – With pelmet Arm & Cover

Max Door Weight: 70 Kg

Max Door Width: 3'6"

Speed Adjustments: 2

Hold Open: Yes

Usage: Public Doors, Office Doors



▶ 4. Door Closers

3. Exposed – With Compass Arm & Cover

Max Door Weight: 150 Kg

Max Door Width: 3'6"

Speed Adjustments: 3

Delay Action: 1-10 sec

Fire Rating: EN 1154

Heavy Duty: Yes

Usage: Kitchen Doors, Public Toilets



▶ 4. Door Closers

4. Automatic Door Opening & Closing

Features -

- Opens Automatically With Remote Control, Card, Password, Sensor Or Button And Closes Automatically.
- With Automatic Locking or Sensor Based Opening

Specifications -

Closing Time: 1 – 255 sec

Hold Open: Yes – From Remote

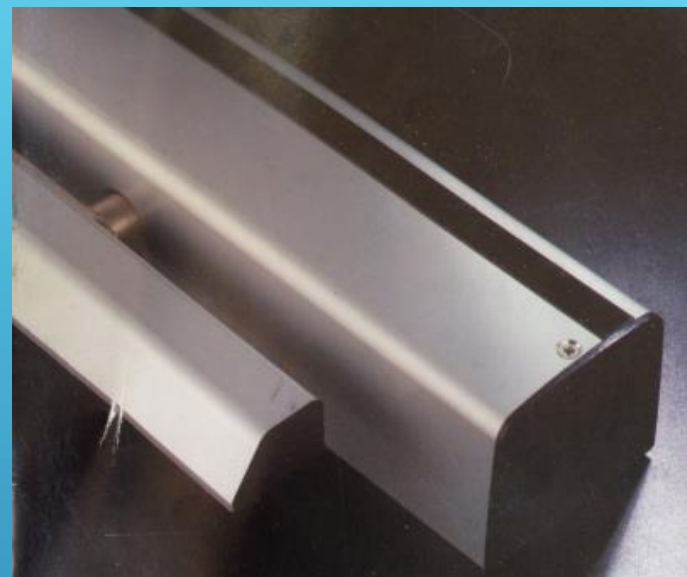
Max Door Weight: 80 Kg

Max Door Width: 3' 6"

Speed Adjustments: 4

Power Adjustment: Yes

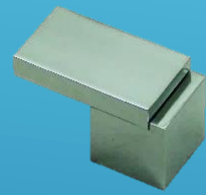
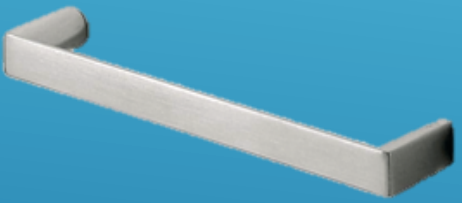
Door Type: Wooden Swing Door



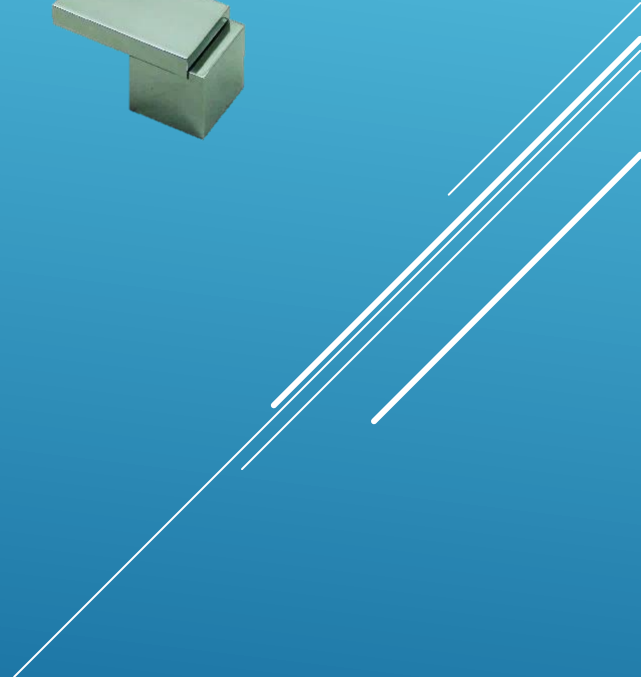
Usage:

- Public Door (With Sensor)
- MDs Office (With Automatic Locking, Opening With Remote, Card, Password)

▶ 5. Wardrobe & Cabinet Handles



*Many Designs, Sizes & Finishes Available



▶ 6. Sauna Locks

Sauna Lock

Key: Waterproof Wrist Band

Emergency Opening: 9V Battery Terminal

Features:

Guest Keys: 1

Staff Keys: 35

Admin Keys: 4

Modes: 2

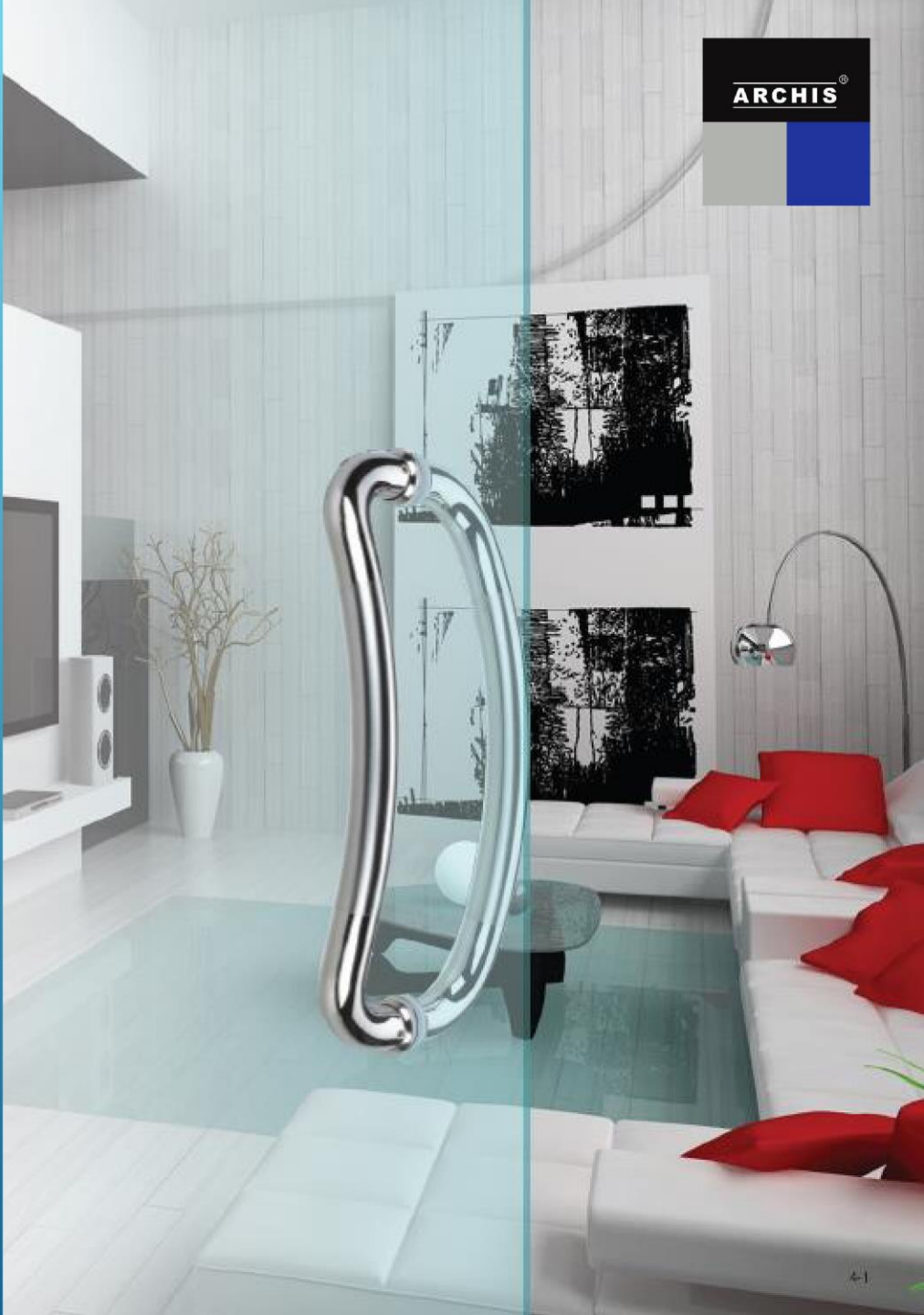
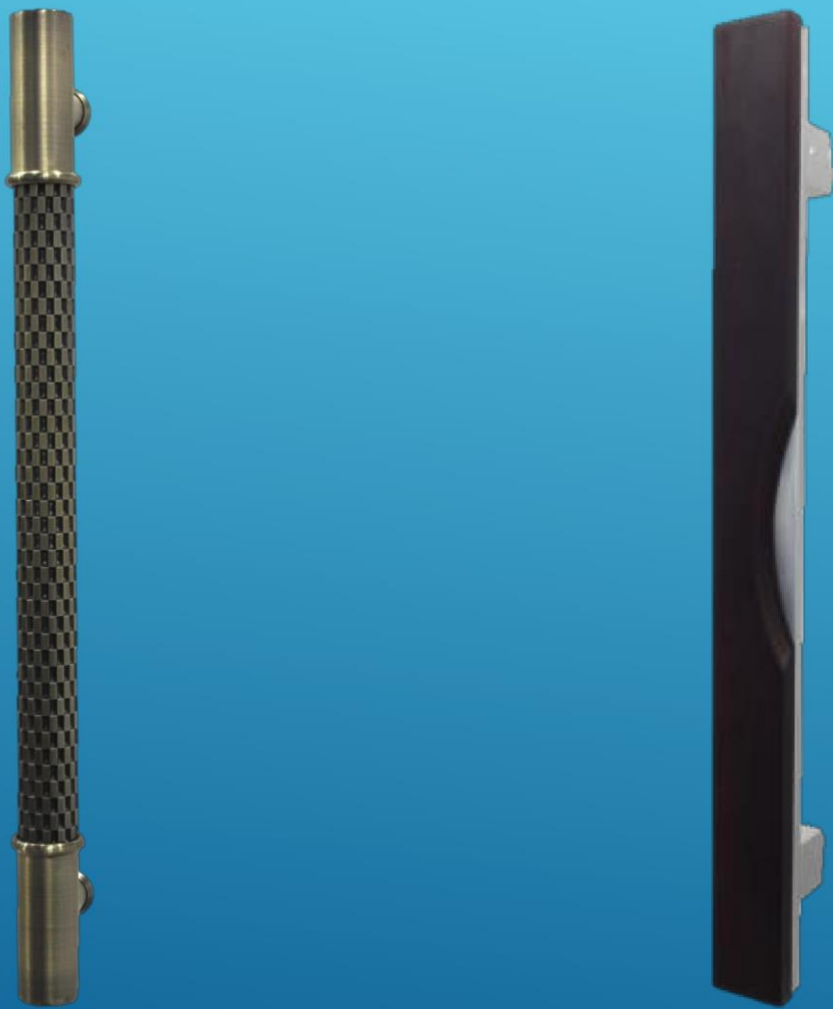
A) Open With Guest or Staff Key

B) Open With Guest & Staff Key

Usage: Lockers For Swimming Pools, Sauna & Steam Rooms



▶ 7. Door Handles



*For Wooden As Well As Glass Doors, Many Designs, Sizes & Finishes Available

▶ 8. Glass Shower Fittings

1. Glass Hinges – Material: Brass, SS 304



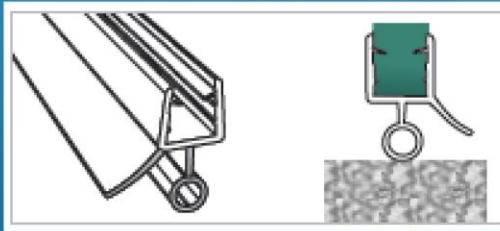
3. Glass Connectors – Material: SS 304



2. Handle & Towel Bar



4. Seals



▶ 9. Glass Door Fittings

1. Floor Hinge



3. Door Handle



2. Patch Fittings



4. Sliding Door Systems



▶ 10. Other Glass Fittings

1. Spider Fittings



2. Canopy Fittings

